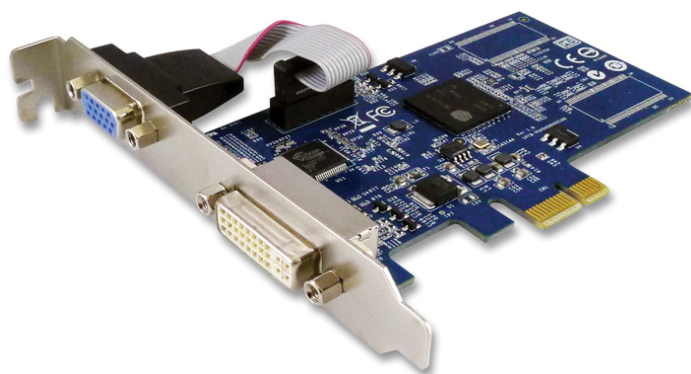


# VGA0449M

PCIe Dual channels 2D Power Saving Graphics Controller



## Introduction

SUNIX VGA0449M graphics card which built-in ultra power saving graphics controller is specializes in commercial and industrial applications environments, only 2W ultra low power consumption, no heat-sink or fan needed, it is not only substantial increase in system MTBF rate and also best choice for green environmental protection energy conservation. With high quality 2D 1920x1080 FullHD resolutions, VGA & DVI-I dual outputs, various drivers supporting, and PCI Express Bus cost efficient design. SUNIX VGA0449M is the high value and reliable graphics solution for server and cost conscious systems, such as servers, Thin Clients, ATM, POS system and industrial PC. This card is the best solution for multi-screen and expanding business opportunities.

## Features

- Fully compliant with PCI Express 1.1 specification.
- Built-in both VGA RGB and DVI-I (single-Link) connections.
- Ultra-Low power consumption 2W makes heat sink free.
- Max 2D resolution FullHD 1920x1080 resolution.
- Certified by CE, FCC, VCCI, BSMI, C-Tick, and RoHS.
- Supports a variety operation system, including Windows and Linux operation systems.

## Specifications

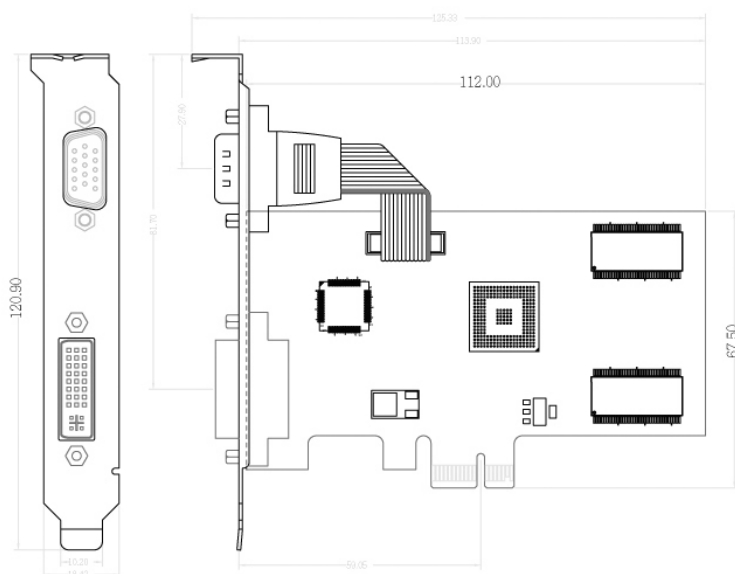
<b>Model</b>	VGA0449M
<b>Description</b>	PCIe Dual channels 2D Power Saving Graphics Controller
<b>Controller</b>	Siliconmotion SM750
<b>Memory</b>	64MB DDR Synchronous DRAM (SDRAM)
<b>Port Type</b>	VGA RGB (D-Sub) DVI-I 24pin + 5pin Female Connector (single-Link)
<b>Power Consumption</b>	2W

<b>O.S. support</b>	Microsoft Client: XP/7/8/8.1 (X86/X64) Microsoft Server: 2003/2008 (X86/X64) Linux: 3.4.x / 3.x Others: DOS
<b>Environment</b>	Operation temp. -10 °C ~ 70 °C Operation humidity: 5 ~ 95% RH Storage temp. -20 °C ~ 85 °C
<b>Dimension</b>	67.5(W) x - 112(L)mm
<b>Regulatory Approvals</b>	EUR: CE, EN55022 Class B, EN55024, EN61000-3-2, EN61000-3-3 US: FCC Part 15 Class B TAIWAN: BSMI: CNS13438 AS/NZS: C-Tick: CISPR22 JAPAN: VCCI

## Resolution Support

Resolution for Windows						
	Color-16bit			Color-32bit		
	60Hz	75Hz	85Hz	60Hz	75Hz	85Hz
640X480	✓	✓	✓	✓	✓	✓
800X600	✓	✓	✓	✓	✓	✓
1024X600	✓	-	-	✓	-	-
1024X768	✓	✓	✓	✓	✓	✓
1280X720	✓	-	-	✓	-	-
1280X768	✓	-	-	✓	-	-
1280X800	✓	-	-	✓	-	-
1280X1024	✓	✓	✓	✓	✓	✓
1360X768	✓	-	-	✓	-	-
1440X900	✓	-	-	✓	-	-
1600X900	✓	✓	✓	-	-	-
1680X1050	✓	-	-	-	-	-
1920X1080	✓	-	-	-	-	-

## Mechanical Drawings (Unit = mm)

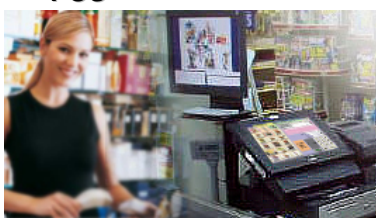


## Package

- VGA0449M – PCI Express Dual channels 2D Power Saving Graphics Controller
- CD Driver
- Quick installation guide
- Low Profile Bracket (Optional)

## Application

### • POS



### • Digital Signage



### • ATM



### • Multi-Screen Stock Market



## Headquarters

### Taiwan

SUNIX Co., Ltd.

Tel : +886-2-8913-1987

Fax : +886-2-8913-1986

Website : [www.sunix.com](http://www.sunix.com)

E-mail : [info@sunix.com](mailto:info@sunix.com)

### America

SUNIX USA, INC.

Tel : +1 (520) 309-3912

Fax : +1 (520) 309-3939

Website : [www.sunix.com](http://www.sunix.com)

E-mail : [info@sunix.com](mailto:info@sunix.com)

### Germany

SUNIX Vertrieb GmbH

Tel : +49(0)6146-601345

Fax : +49(0)6146-601346

Website : [www.sunix.com](http://www.sunix.com)

E-mail : [info@sunix-gmbh.de](mailto:info@sunix-gmbh.de)

### China

Shanghai Office

Tel : +86-21-6469-1620

Fax : +86-21-6468-8346

Website : [www.sunix.com.cn](http://www.sunix.com.cn)

E-mail : [info@sunix.com.cn](mailto:info@sunix.com.cn)

Beijing Office

Tel : +86-010-65308429

Fax : +86-010-65308421

Shenzhen Office

Tel : +86-755-33500418